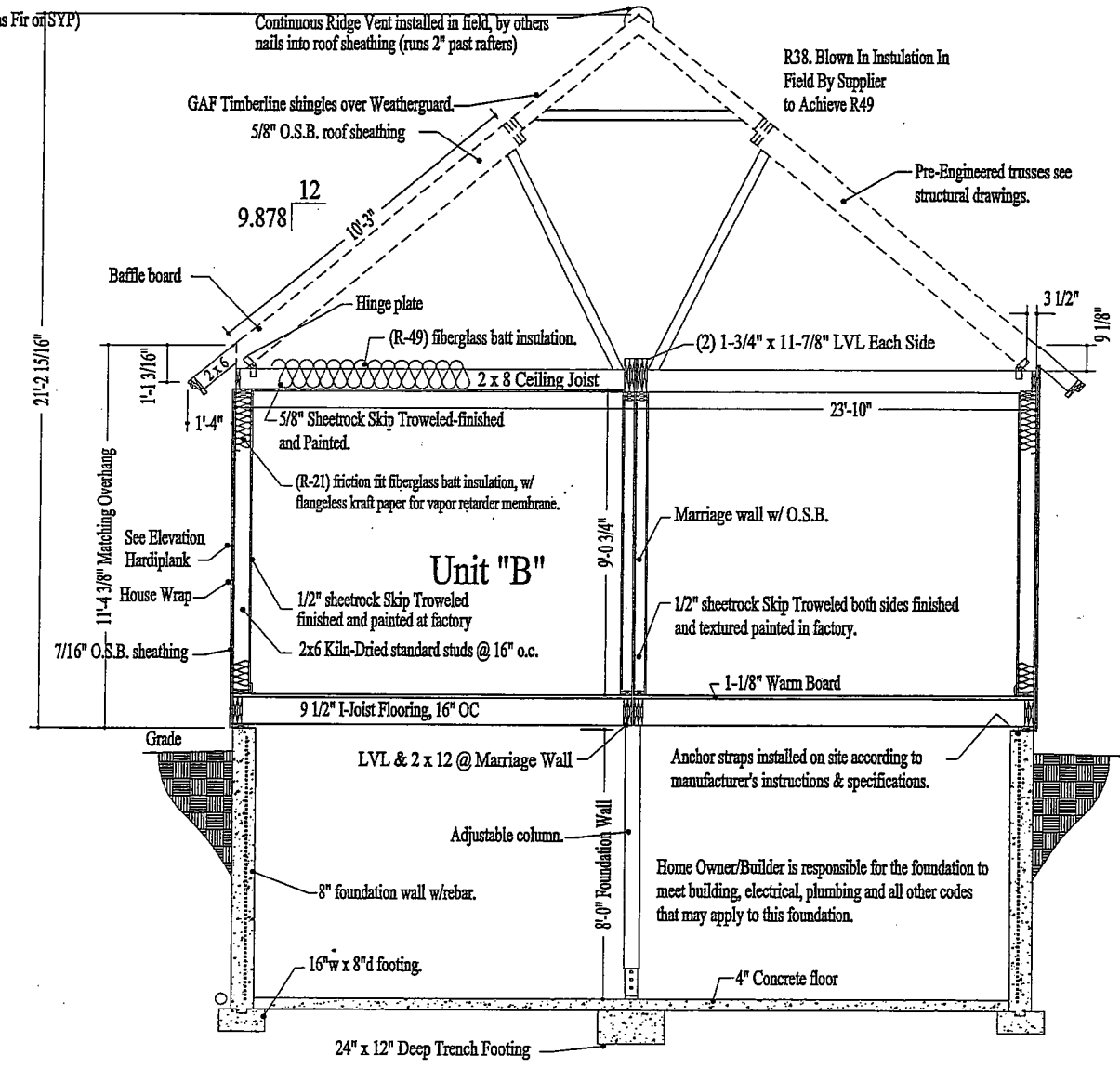
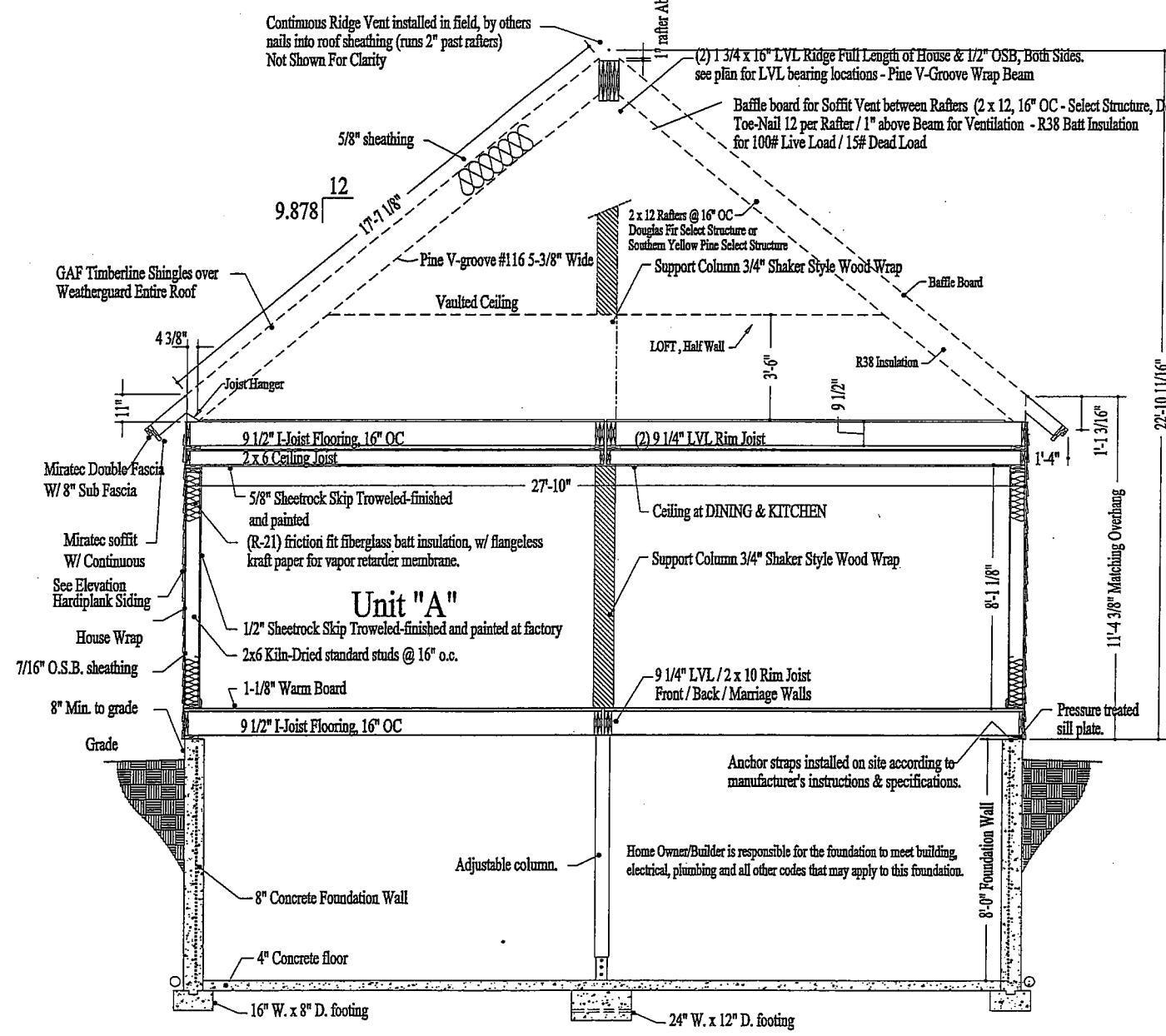
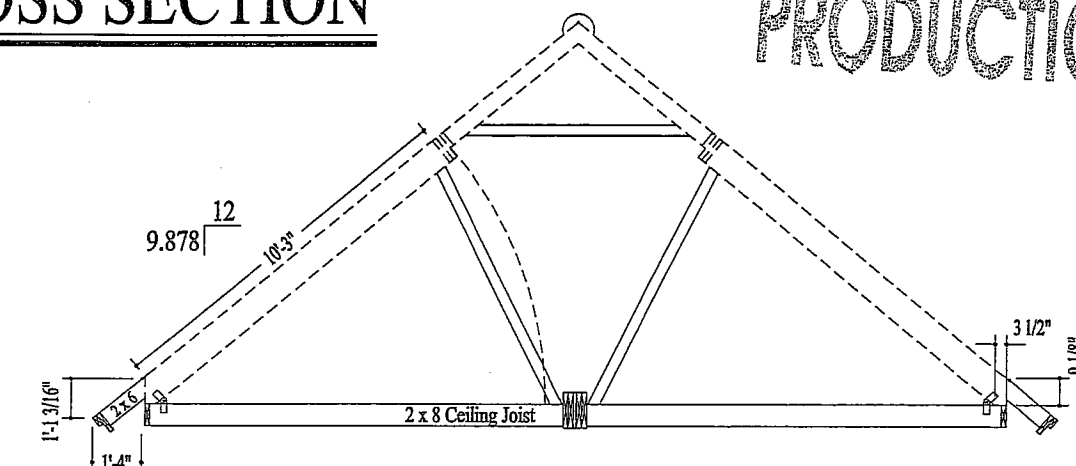
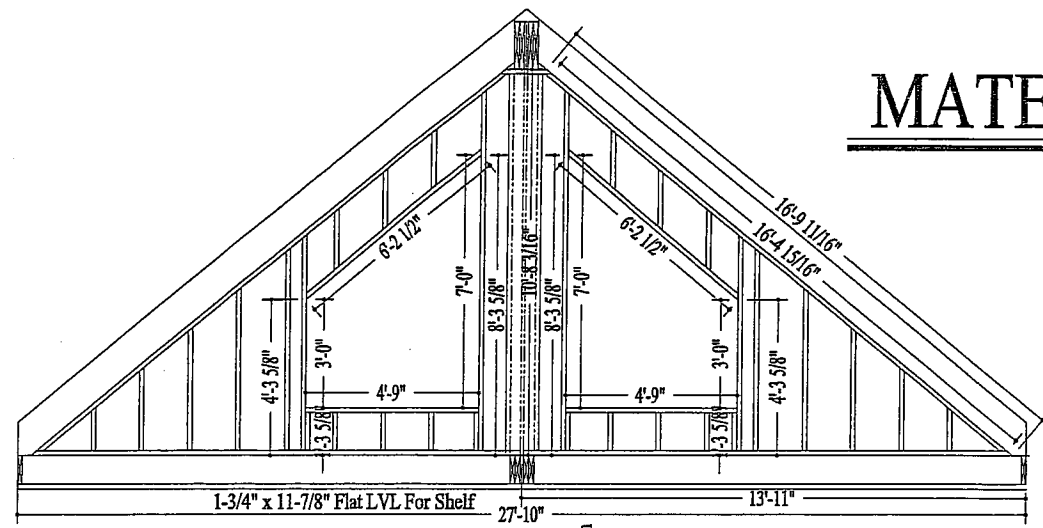


MATERIAL CROSS SECTION

PRODUCTION



Revision	By
09-22-05	AH
10-12-05	AH
11-07-05	AH

Prebuilt Housing Tech, LLC
 BUILDER
 825 Little Beaver Trail
 Dillon, CO, 80435
 970-468-1186

Construction Drawings For:
The GARDNER Residence
 980 Rescola Avenue, Silverthorne, CO
 Lot 26 Blue River Mesa Subdivision,
 Summit County, CO.

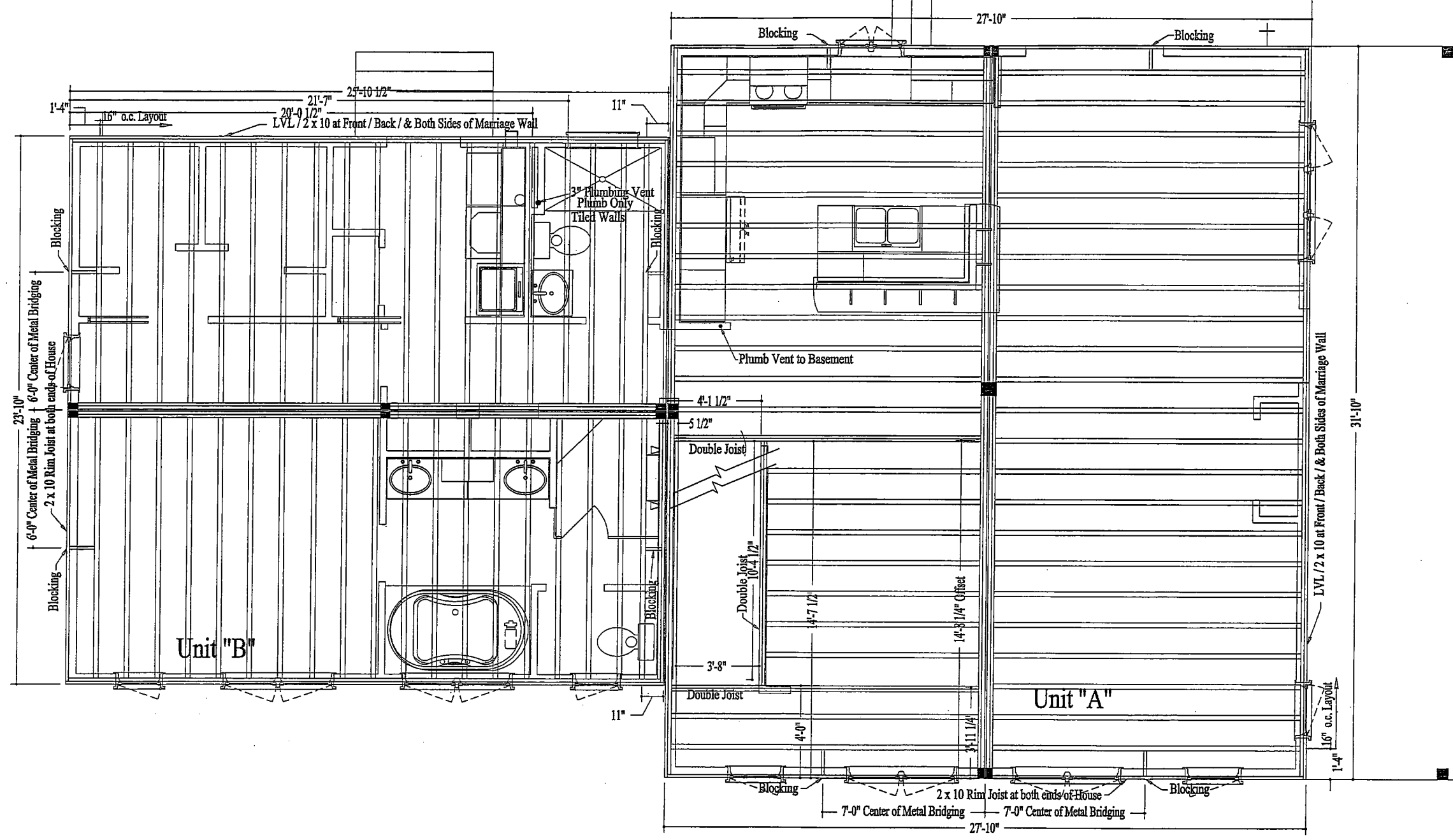
WARD CRAFT HOMES, INC.
 "A REPUTATION BUILT ON PRIDE & QUALITY"
 KANSAS CITY, MISSOURI
 816-451-1100
 FAX: 816-451-1104
 www.wardcraft.com

Date: 09-20-05
 Scale: AS NOTED
 Drawn: AH
 Project: 4001-F
 Sheet

A-5a
 Of Copyright 2005

PRODUCTION

All Measurements are from End of House to Center of Joist & Stair Openings



FLOOR JOIST

Floor Joist @ 16" o.c. Unless Otherwise Noted

Scale: 3/16"=1'-0"

Revision	By
09-22-05	AH
10-12-05	AH
11-07-05	AH

Prebuilt Housing Tech, LLC
 BUILDER
 825 Little Beaver Trail
 Dillon, CO. 80435
 970-468-1186

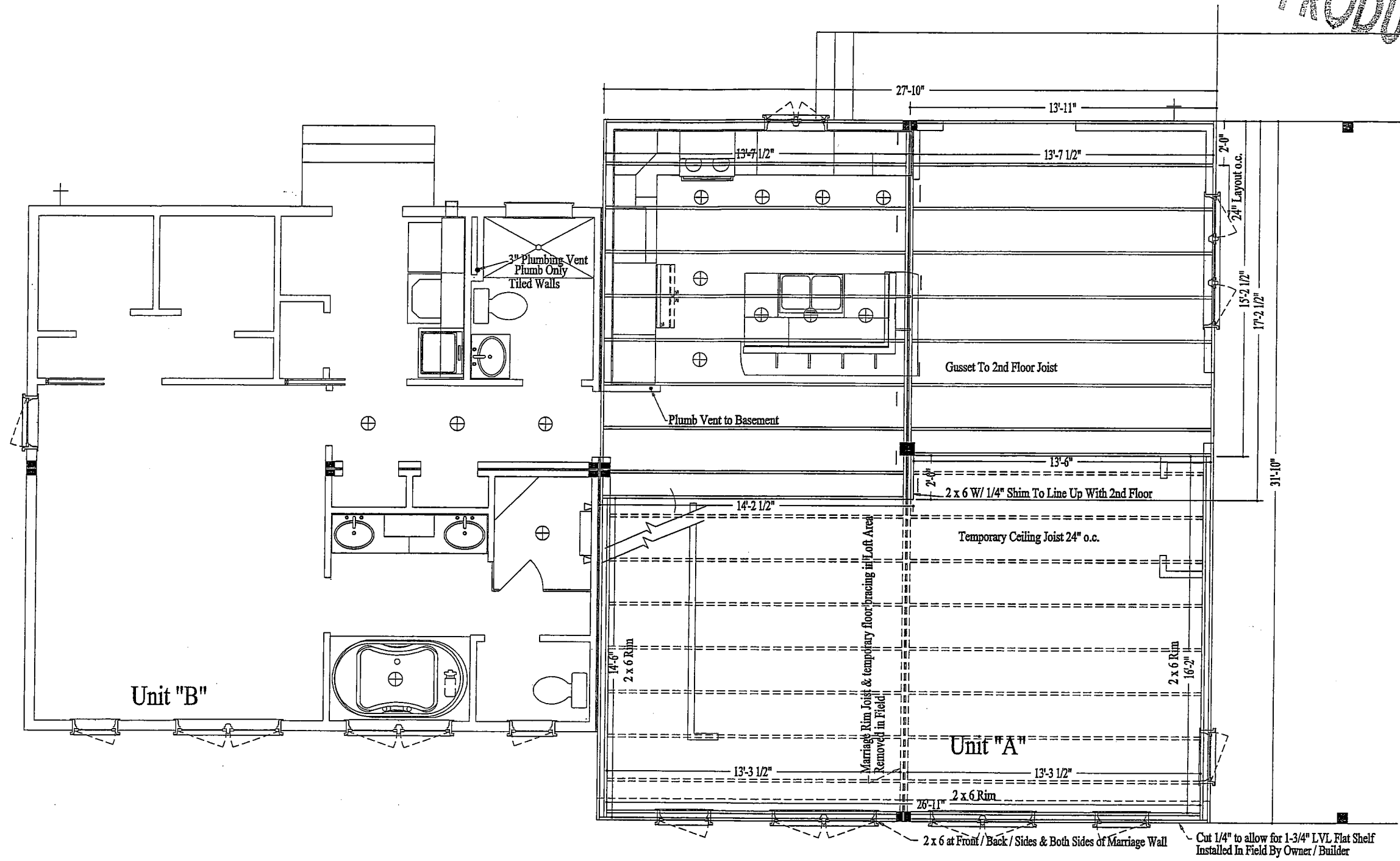
Construction Drawings For:
The GARDNER Residence
 980 Rescola Avenue, Silverthorne, CO.
 Lot 26 Blue River Mesa Subdivision,
 Summit County, CO.

WARD CRAFT HOMES, INC.
 "A REPUTATION BUILT ON PRIDE & QUALITY"
 KANSAS CITY, MISSOURI
 816-451-1100
 Fax: (816) 451-3206

Date:	09-20-05
Scale:	AS NOTED
Drawn:	AH
Project:	4001-F
Sheet	

A-6
 Of Copyright 2005

PRODUCTION



Floor Joist @ 16" o.c. Unless Otherwise Noted

CEILING JOIST

Scale: 3/16"=1'-0"

Revision	By
09-22-05	AH
10-12-05	AH
11-07-05	AH

Prebuilt Housing Tech, LLC
 BUILDER
 825 Little Beaver Trail
 Dillon, CO, 80435
 970-468-1186

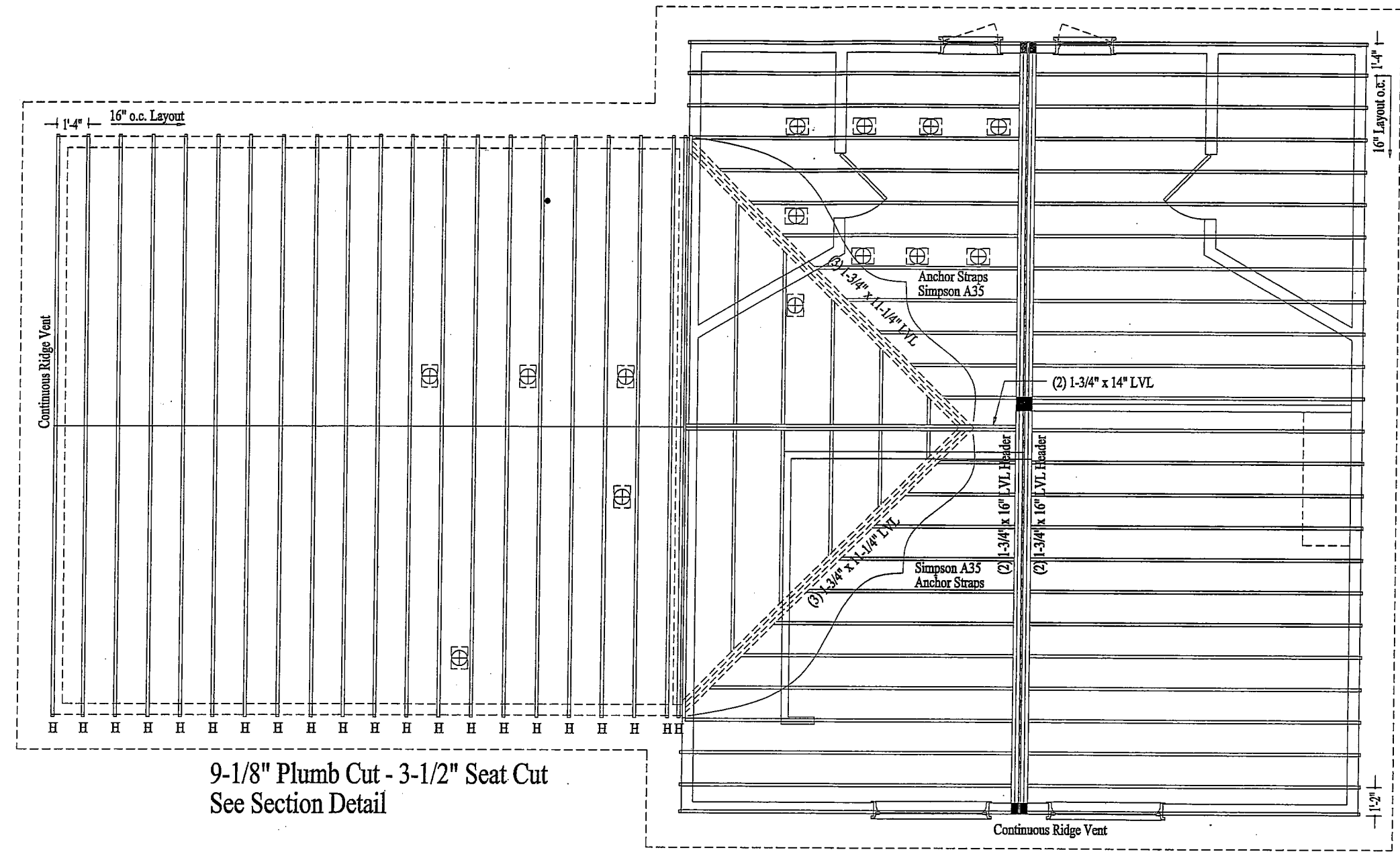
Construction Drawings For:
The GARDNER Residence
 980 Rescola Avenue, Silverthorne, CO.
 Lot 26 Blue River Mesa Subdivision,
 Summit County, CO.

WARD CRAFT HOMES, INC.
 "A REPUTATION BUILT ON PRIDE & QUALITY"
 10000 W. 11th Ave., Suite 100
 Denver, CO 80231
 P: (303) 426-1100
 F: (303) 426-1100

Date: 09-20-05
 Scale: AS NOTED
 Drawn: AH
 Project: 4001-F
 Sheet

A-7
 Of Copyright 2005

PRODUCTION



9-1/8" Plumb Cut - 3-1/2" Seat Cut
See Section Detail

11" Plumb Cut - 4-3/8" Seat Cut
See Section Detail

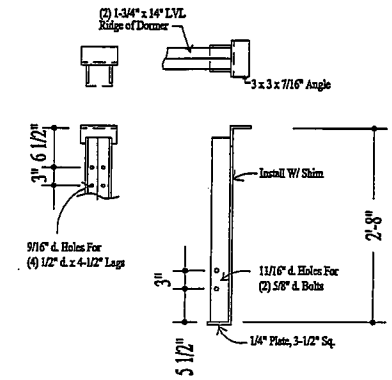
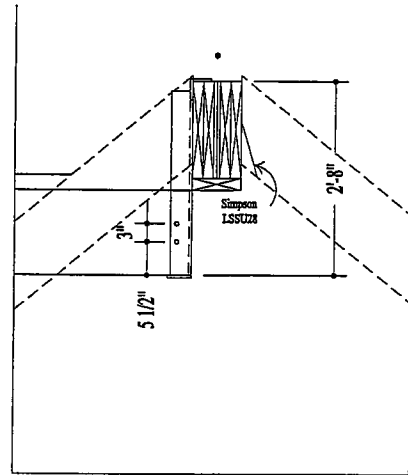
RAFTER PLAN

Scale: 3/16"=1'-0"

Rafters @ 16" o.c. Unless Otherwise Noted

Symbol legend	Roof description	
—	Roof line	See Detail
---	Cathedral area	See Detail
—	Truss	See Detail
	Truss style	See Detail
	Truss bottom cord	See Detail
	Roof pitch	10/12
	High truss heel	See Detail
	Overhang	16"
	Fascia	See Detail

Abbreviations		
PRV	Power roof vent	G Gable truss
RV	Roof vent	C Cantilever truss
R	Regular truss	H Hinged rafter
S	Scissors truss	

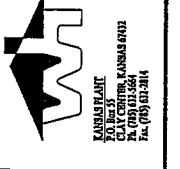


Revision	By
09-22-05	AH
10-12-05	AH
11-07-05	AH

Prebuilt Housing Tech, LLC
 BUILDER
 825 Little Beaver Trail
 Dillon, CO, 80435
 970-488-1186

Construction Drawings For:
The GARDNER Residence
 980 Rescola Avenue, Silverthorne, CO
 Lot 26 Blue River Mesa Subdivision,
 Summit County, CO.

WARDCRAFT HOMES, INC.
 "A REPUTATION BUILT ON PRIDE & QUALITY"
 NEBRASKA PLANT
 1001 W. 14th St.
 Lincoln, NE 68502
 Tel: (402) 481-1886
 Fax: (402) 481-5966

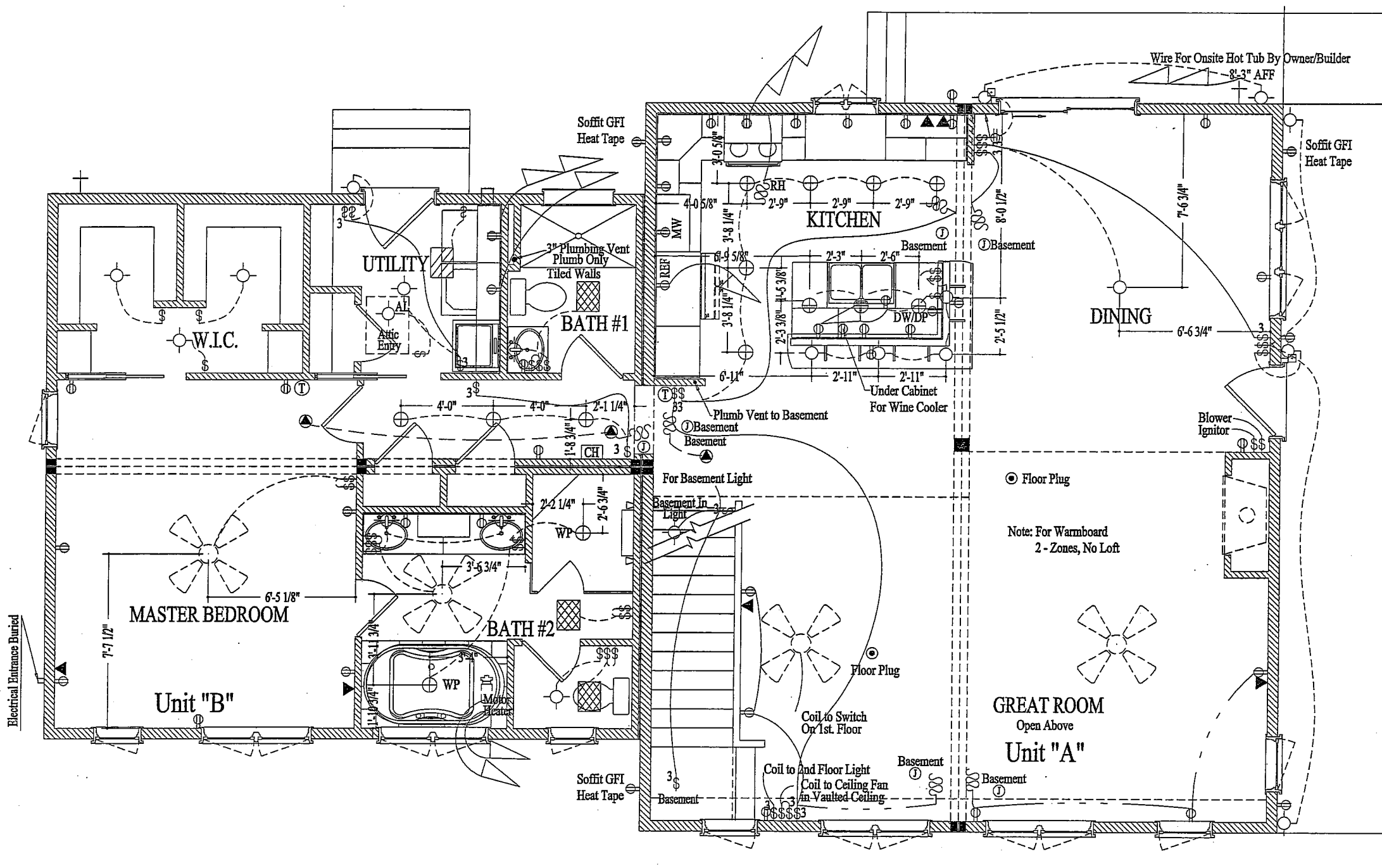


Date: 09-20-05
 Scale: AS NOTED
 Drawn: AH
 Project: 4001-F
 Sheet

A-9
 Of Copyright 2005

Revision	By
09-22-05	AH
10-12-05	AH
11-07-05	AR

PRODUCTION



Prebuilt Housing Tech, LLC
 BUILDER
 825 Little Beaver Trail
 Dillon, CO, 80435
 970-468-1186

The GARDNER Residence
 Construction Drawings For:
 980 Rescola Avenue, Silverthorne, CO
 Lot 26 Blue River Mesa Subdivision,
 Summit County, CO.

WARD CRAFT HOMES, INC.
 "A REPUTATION BUILT ON PRIDE & QUALITY"
 1000 S. W. 10th St., Suite 100
 Fort Lauderdale, FL 33315
 Tel: (954) 573-3366

ELECTRICAL PLAN

Scale: 3/16"=1'-0"

NOTE: Receptacles and Lights may vary in exact location shown because of stud and rafter placement

ELECTRICAL SYMBOL LEGEND			
Flourescent Light	Central vacuum	110v single circuit	Vent
\$DM Dimmer switch	Smoke detector	Quad receptacle	Light-Vent
\$4 4-way light switch	Door bell	Door bell chimes	Heat-vent
\$3 3-way light switch	Thermostat	Junction box	Heat - Vent - Light w/ 3 Stacked Switches
\$ Light switch	Recessed light	Meter Can	Floor duplex receptacle
Wall light	220v receptacle	Coil	
Standard light	110v duplex receptacle		
			Top receptacle to be switched bottom receptacle to be "hot"
			3 wire switch leg
			3 way switch
			Switch leg
			Number designates panel circuit

A.L. = Attic light
 BM = Basement
 DW = Dishwasher
 DP = Disposal
 GFCI = Ground fault circuit interrupter
 F = Furnace
 MW = Microwave
 M = Motor

PC = Pull chain
 PRV = Power roof vent
 R.H. = Range hood
 WH = Water heater
 WP = Water proof
 WHP = Whirlpool

Meter Can:
 METER
 Electrical Entrance Type:
 ELECTRICAL
 Service Panel:
 PANEL

Exterior Lights are weather proof fixtures.
 Exterior Outlets are GFCI protected & weather proof
 All receptacles serving countertops are GFCI protected.
 All receptacles within 6 feet of sinks are GFCI protected.

Date:	09-20-05
Scale:	AS NOTED
Drawn:	AH
Project:	4001-F
Sheet:	

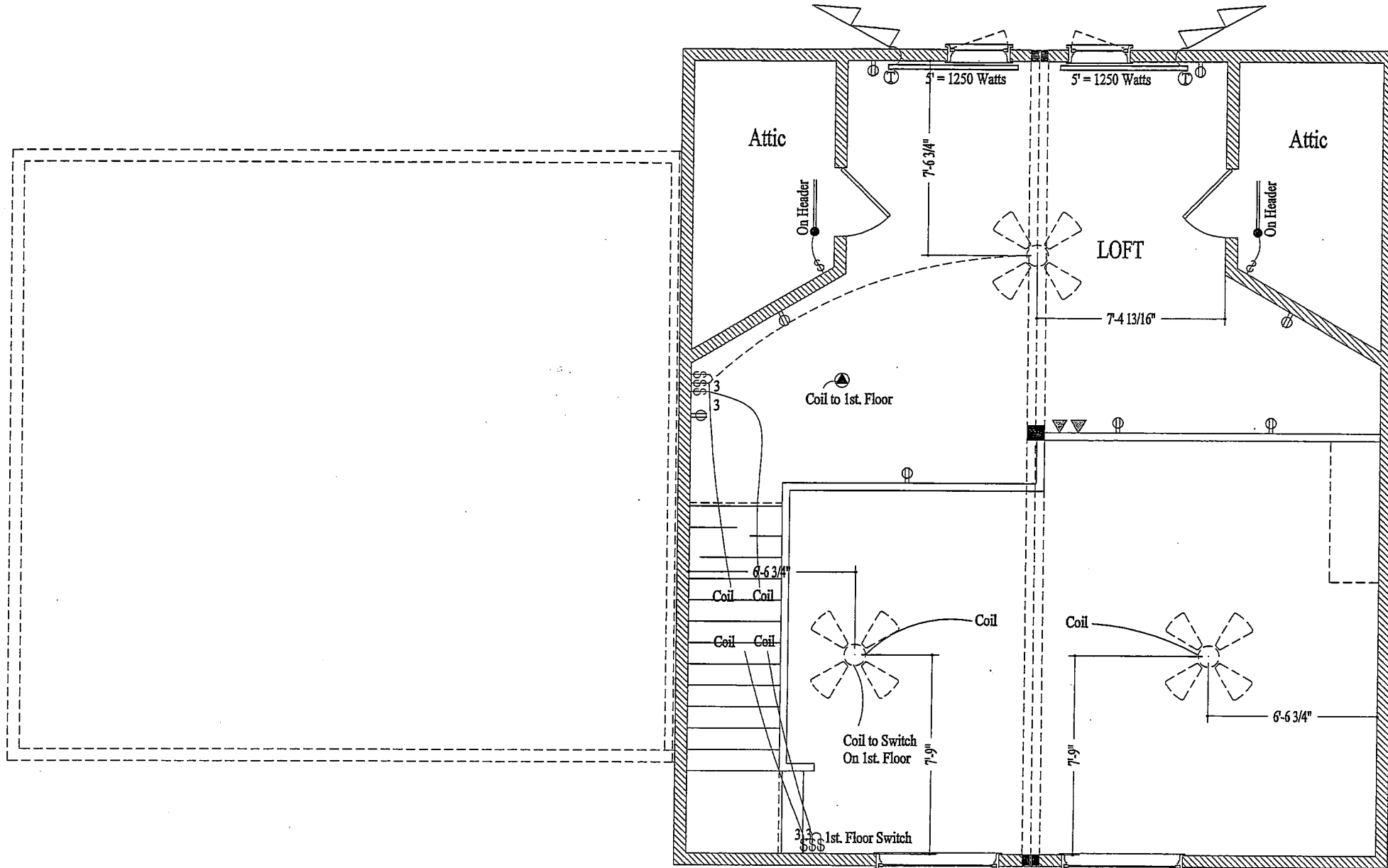
Revision	By
09-22-05	AE
10-12-05	AE
11-07-05	AE

PRODUCTION

Prebuilt Housing Tech, LLC
 BUILDER
 825 Little Beaver Trail
 Dillon, CO 80435
 970-468-1186

Construction Drawings For:
The GARDNER Residence
 980 Rescola Avenue, Silverthorne, CO.
 Lot 26 Blue River Mesa Subdivision,
 Summit County, CO.

WARD CRAFT HOMES, INC.
 "A REPUTATION BUILT ON PRIDE & QUALITY"
 NEBRASKA PLANT
 E. Hwy 7 & Hwy 28
 Grand Island, NE 68801
 ILLINOIS PLANT
 1400 S. 14th St.
 Lincoln, NE 68502
 PA. (402) 433-3066
 FAX (402) 433-3066



2ND. FLOOR ELECTRICAL PLAN

NOTE: Receptacles and Lights may vary in exact location shown because of stud and rafter placement

Scale: 3/16"=1'-0"

ELECTRICAL SYMBOL LEGEND			
Flourescent Light	Central vacuum	110v single circuit	Vent
\$DM Dimmer switch	Smoke detector	Quad receptacle	Light-Vent
\$4 4-way light switch	Door bell	Door bell chimes	Heat-vent
\$3 3-way light switch	Thermostat	Junction box	Heat - Vent - Light w/ 3 Stacked Switches
\$ Light switch	Recessed light	Meter Can	Floor duplex receptacle
Wall light	220v receptacle	Coil	
Standard light	110v duplex receptacle		
			Top receptacle to be switched bottom receptacle to be "hot"
			3 wire switch leg
			3 way switch
			Switch leg
			Number designates panel circuit

- A.L. = Attic light
- BM = Basement
- DW = Dishwasher
- DP = Disposal
- GFCI = Ground fault circuit interrupter
- F. = Furnace
- MW = Microwave
- M = Motor
- PC = Pull chain
- PRV = Power roof vent
- R.H. = Range hood
- WH = Water heater
- WP = Water proof
- WHP= Whirlpool

Exterior Lights are weather proof fixtures.
 Exterior Outlets are GFCI protected & weather proof.
 All receptacles serving countertops are GFCI protected.
 All receptacles within 6 feet of sinks are GFCI protected.

Date:	09-20-05
Scale:	AS NOTED
Drawn:	AH
Project:	4001-F
Sheet	

A-10a

Of Copyright 2005

PRODUCTION

Revision	By
09-22-05	AH
10-12-05	AH
11-07-05	AH

Prebuilt Housing Tech, LLC
 BUILDER
 825 Little Beaver Trail
 Dillon, CO 80435
 970-468-1186

Construction Drawings For:
The GARDNER Residence
 980 Tecoma Avenue, Silverthorne, CO.
 Lot 26 Blue River Mesa Subdivision,
 Summit County, CO.

WARDCRAFT HOMES, INC.
 "A REPUTATION BUILT ON PRIDE & QUALITY"
 KANSAS STATE BOARD OF ARCHITECTS
 LICENSE NO. 100000000000
 MISSOURI BOARD OF ARCHITECTS
 LICENSE NO. 000000000000
 ILLINOIS BOARD OF ARCHITECTS
 LICENSE NO. 000000000000
 INDIANA BOARD OF ARCHITECTS
 LICENSE NO. 000000000000

DOOR SCHEDULE

I.D.	MANUFACTURER	SIZE	ROUGH OPENING	DESCRIPTION	STYLE	HINGE	QTY
1	WARDCRAFT	2'-6" X 6'-8"	5'-1 1/4" X 6'-11 1/2"	INTERIOR POCKET	4-PANEL		1
2	WARDCRAFT	2'-4" X 6'-8"	2'-6" X 6'-11"	INTERIOR SWING	4-PANEL	L	1
3	THERMA-TRU	3'-0" x 6'-8"	3'-2 1/2" x 6'-10 1/2"	EXTERIOR SWING	S206 Low E Glass	L	1
4	WARDCRAFT	2'-4" X 6'-8"	2'-6" X 6'-11"	INTERIOR SWING	4-PANEL	R	1
5	WARDCRAFT	2'-4" X 6'-8"	2'-6" X 6'-11"	INTERIOR SWING	4-PANEL	R	1
6	WARDCRAFT	2'-4" X 6'-8"	2'-6" X 6'-11"	INTERIOR SWING	4-PANEL	L	1
7	WARDCRAFT	2'-8" X 6'-8"	5'-5 1/4" X 6'-11 1/2"	INTERIOR POCKET	4-PANEL		1
8	WARDCRAFT	2'-4" X 6'-8"	2'-6" X 6'-11"	INTERIOR SWING	4-PANEL	L	1
9	WARDCRAFT	2'-6" X 6'-8"	2'-8" X 6'-11"	INTERIOR SWING	4-PANEL	R	1
10	WARDCRAFT	2'-4" X 6'-8"	2'-6" X 6'-11"	INTERIOR SWING	4-PANEL	R	1
11	ANDERSEN	6'-0" x 6'-10"	6'-0" x 6'-11"	SLIDING PATIO 400 Series	GLASS		1
12	THERMA-TRU	3'-0" x 6'-8"	3'-2 1/2" x 6'-10 1/2"	EXTERIOR SWING	TTFC10 Low E Glass	L	1
13	WARDCRAFT	2'-6" X 4'-0"	2'-8" X 4'-0"	INTERIOR SWING	4-PANEL	L	1
14	WARDCRAFT	2'-6" X 4'-0"	2'-8" X 4'-0"	INTERIOR SWING	4-PANEL	R	1
15	BY OTHERS	9'-0" x 8'-0"		GARAGE DOOR			1
16	BY OTHERS	9'-0" x 8'-0"		GARAGE DOOR			1
17	BY OTHERS	3'-0" x 6'-8"		EXTERIOR SWING	Fire Door	L	1
18	BY OTHERS	2'-6" X 6'-8"		INTERIOR SWING	4-PANEL	L	1
19	BY OTHERS	2'-4" X 6'-8"		INTERIOR SWING	4-PANEL	L	1
20	BY OTHERS	2'-6" X 6'-8"		INTERIOR SWING	4-PANEL	R	1
21	BY OTHERS	2'-0" X 6'-8"		INTERIOR SWING	4-PANEL	L	1
22	BY OTHERS	5'-0" X 6'-8"		INTERIOR BY-PASS	4-PANEL		1
23	THERMA-TRU	3'-0" x 6'-8"	5'-9 1/2" x 6'-10 1/2"	EXTERIOR SWING Sent With House	CCA230 W/ (2) CCA3400	R	1
24	BY OTHERS	4'-0" X 6'-8"		INTERIOR BY-PASS	4-PANEL		1
25	BY OTHERS	2'-6" X 6'-8"		INTERIOR SWING	4-PANEL	R	1
26	BY OTHERS	2'-6" X 6'-8"		INTERIOR SWING	4-PANEL	L	1
27	BY OTHERS	4'-0" X 6'-8"		INTERIOR BY-PASS	4-PANEL		1
28	BY OTHERS	2'-4" X 6'-8"		INTERIOR SWING	4-PANEL	L	1
29	BY OTHERS	2'-4" X 6'-8"		INTERIOR SWING	4-PANEL	R	1
30	BY OTHERS	2'-4" X 6'-8"		INTERIOR SWING	4-PANEL	R	1
TOTAL							30

Date: 09-20-05
 Scale: AS NOTED
 Drawn: AH
 Project: 4001-F
 Sheet

A-12
 Of Copyright 2005

PRODUCTION

Revision	By
09-22-05	AH
10-12-05	AH
11-07-05	AH

Prebuilt Housing Tech, LLC
 BUILDER
 825 Little Beaver Trail
 Dillon, CO 80435
 970-468-1186

Construction Drawings For:
The GARDNER Residence
 980 Rescoba Avenue, Silverthorne, CO.
 Lot 26 Blue River Mesa Subdivision,
 Summit County, CO.

WARD CRAFT HOMES, INC.
 "A REPUTATION BUILT ON PRIDE & QUALITY"
 1000 W. 10th St., Suite 100
 Fort Collins, CO 80521
 Phone: 970-221-2000
 Fax: 970-221-2006

WINDOW SCHEDULE

I.D.	MANUFACTURER	DESCRIPTION	NOMENCLATURE	ROUGH OPENING	LOCATION	QTY
A	ANDERSEN	CLAD CASEMENT	CW15-L	28 7/8" x 60 3/8"	MASTER BEDROOM	1
A	ANDERSEN	CLAD CASEMENT	CW15-L	28 7/8" x 60 3/8"	GREAT ROOM	1
B	ANDERSEN	CLAD CASEMENT	C13-L	24 5/8" x 36 1/2"	MASTER BEDROOM	1
B	ANDERSEN	CLAD CASEMENT	C13-R	24 5/8" x 36 1/2"	BATH #2	1
C	ANDERSEN	CLAD CASEMENT	CW255	57" x 65 3/8"	MASTER BEDROOM	1
C	ANDERSEN	CLAD CASEMENT	CW255 SG	57" x 65 3/8"	BATH #2	1
D		GLASS BLOCKS		36"W x 23"H	BATH #1	1
D	BY OTHERS	GLASS BLOCKS		36"W x 11 1/2"H	BATH #3	1
E	ANDERSEN	CLAD CASEMENT	CW16-L SG	28 7/8" x 72 3/8"	GREAT ROOM	1
E	ANDERSEN	CLAD CASEMENT	CW16-R SG	28 7/8" x 72 3/8"	GREAT ROOM	1
F	ANDERSEN	CLAD CASEMENT	CW25 (1) SG	57" x 60 3/8"	GREAT ROOM	2
G	ANDERSEN	CLAD CASEMENT	C34	72 3/8" x 48 1/2"	DIING	1
H	ANDERSEN	CLAD CASEMENT	CW14-L	28 7/8" x 48 1/2"	LOFT	1
H	ANDERSEN	CLAD CASEMENT	CW14-R	28 7/8" x 48 1/2"	LOFT	1
H	BY OTHERS	CLAD CASEMENT	CW14-L	28 7/8" x 48 1/2"	BEDROOM #2	1
H	BY OTHERS	CLAD CASEMENT	CW14-R	28 7/8" x 48 1/2"	BEDROOM #2	1
H	BY OTHERS	CLAD CASEMENT	CW14-L SG	28 7/8" x 48 1/2"	ENTRY	1
I	ANDERSEN	CLAD CASEMENT	TRAPEZOID	SEE DETAIL	GREAT ROOM	2
J	ANDERSEN	CLAD CASEMENT	CR23	34 1/4" x 36 1/2"	KITCHEN	1
K	BY OTHERS	CLAD CASEMENT	CW135-R	28 7/8" x 41 3/8"	BEDRROM #1	1
TOTAL						22

Date: 09-20-05
 Scale: AS NOTED
 Drawn: AH
 Project: 4001-F
 Sheet

A-12a
 Of Copyright 2005